

## STANDARD ARCHITECTURAL & CUSTOM TRIM AND FLASHING

Find the perfect fit with Metallic Products' standard building trim and die formed flashing.

### STANDARD FEATURES

- Available in running lengths up to 20'
- Constructed of 26-gauge material
- Available in Galvalume, Polar White or standard color
- Boxed for shipment

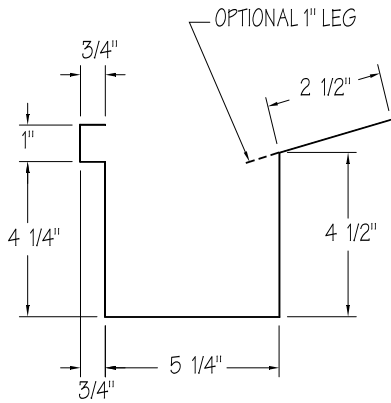
### STANDARD TRIM ITEMS

- Box Gutter
- Sculptured Gutter
- Box Rake Trim
- Sculptured Rake Trim
- Peak Boxes
- Corner Boxes
- Downspout (straight)
- Downspout (with kickout)
- Downspout Outlet
- Downspout Elbow
- Downspout Offset
- Sculptured Eave Trim
- High Side Eave Trim
- Simple Eave Trim
- Corner Trim "R" Panel
- Corner Trim "U" Panel
- Inside Corner "R" Panel
- Inside Corner "U" Panel
- Jamb Trim
- Head Trim
- Sill Trim
- Drip Trim
- Cap Trim
- Starter Trim "A" Panel
- Transition Trim
- Ridge Cap
- Soffit / Valley Flashing
- Valley Flashing

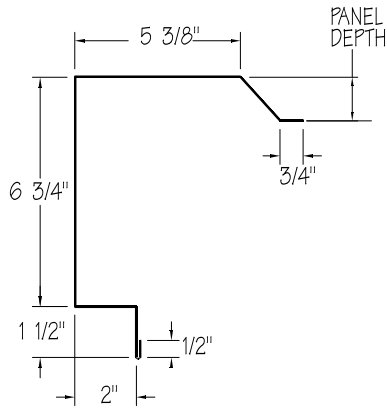


## TRIM PROFILES

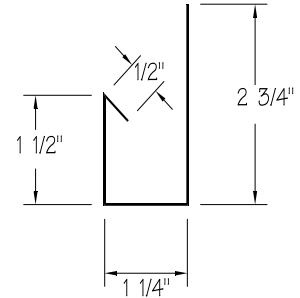
**BOX GUTTER – EGI**



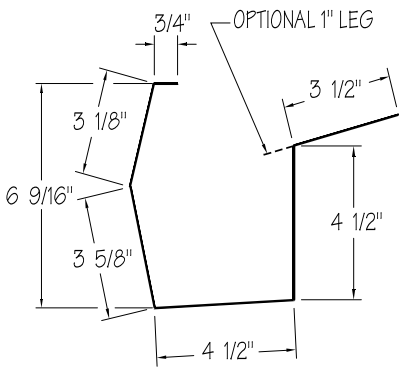
**BOX RAKE TRIM – RT1**



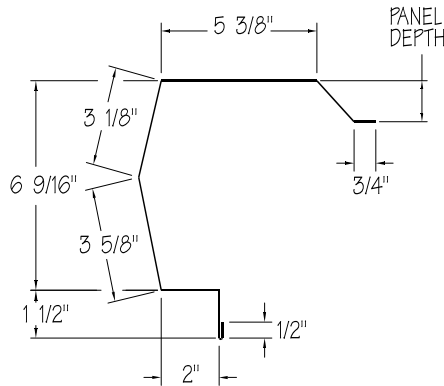
**JAMB TRIM – JT17**



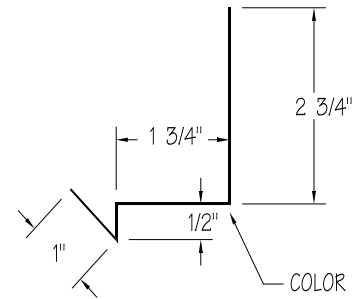
**SCULPTURED GUTTER – EG2**



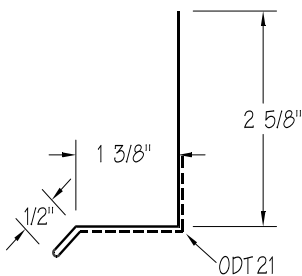
**SCULPTURED RAKE TRIM – RT2**



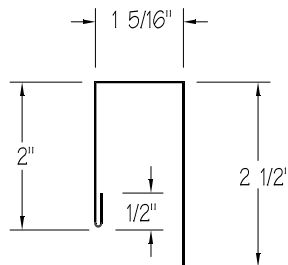
**HEAD TRIM – HT18**



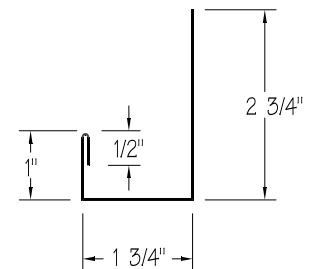
**DRIP TRIM – DT21**



**SILL TRIM – ST20**

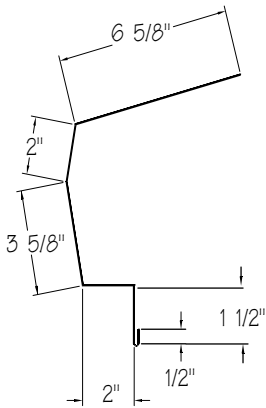


**HEAD TRIM – HT19**

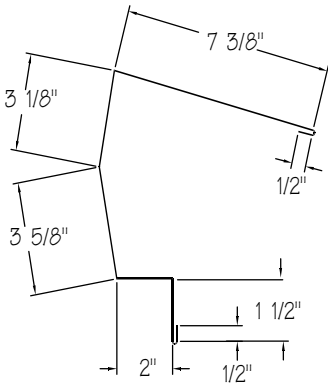


## TRIM PROFILES

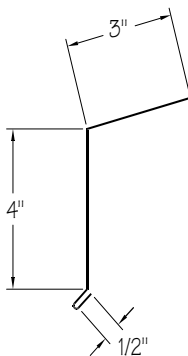
**SCULPTURED EAVE TRIM – ET3**



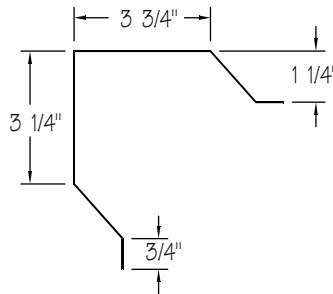
**HIGH SIDE EAVE TRIM – ET4**



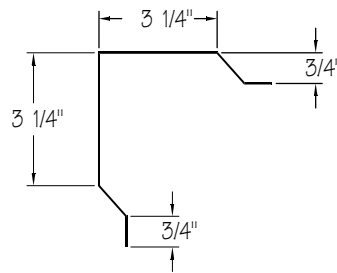
**SIMPLE EAVE TRIM – ET5**



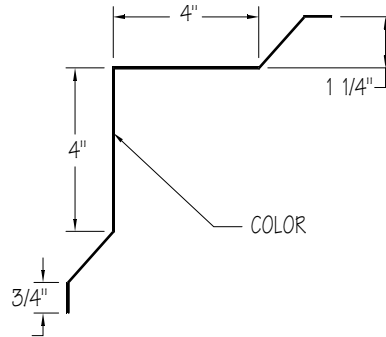
**CORNER TRIM "R" PANEL – CT6**



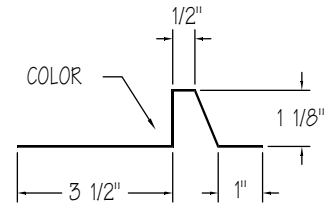
**CORNER TRIM "U" PANEL – CT7**



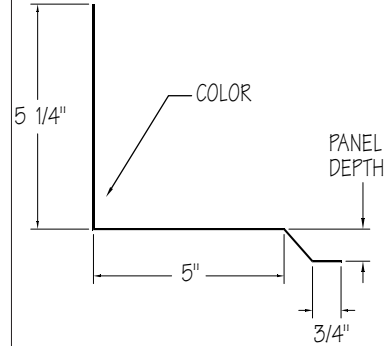
**INSIDE CORNER "R" PANEL – CT8**



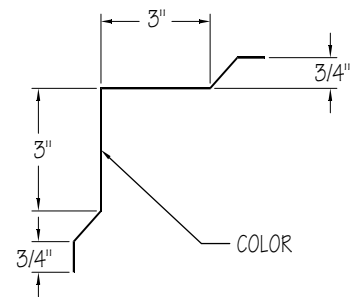
**STARTER TRIM "A" PANEL – ST26**



**TRANSITION TRIM – TT27**

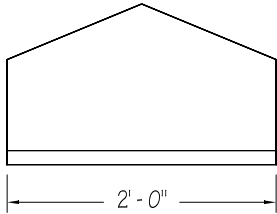


**INSIDE CORNER "U" PANEL – CT9**

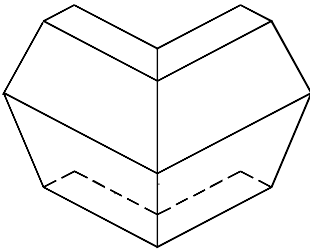


## TRIM PROFILES

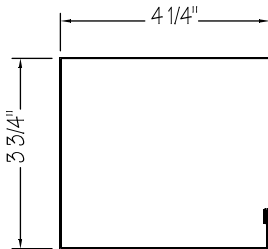
**PEAK BOXES**



**CORNER BOXES**



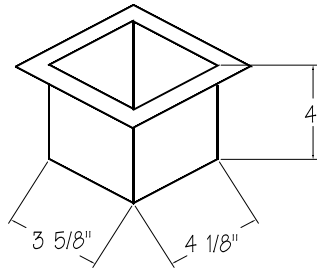
**DOWNSPOUT (STRAIGHT) – DS12**



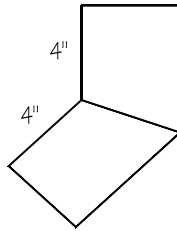
**DOWNSPOUT (WITH KICKOUT) – DS13**



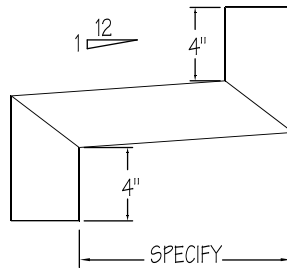
**DOWNSPOUT OUTLET – DS14**



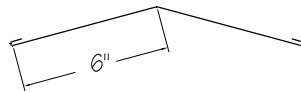
**DOWNSPOUT ELBOW 45° – DS15**



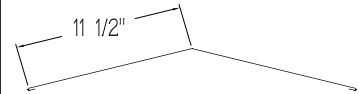
**DOWNSPOUT OFFSET – DS16**



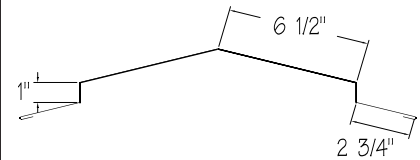
**SOFFIT/VALLEY FLASHING – SV24**



**RIDGE CAP – RC22**



**RIDGE CAP – RC23**



**VALLEY FLASHING – SV25**



**CAP TRIM – CT26**

