



# ORDER FORM

## ➤ MP-RH2

### SLOPE MOUNT ROOF ACCESS HATCH, FLAT MOUNTING FLANGE

Please submit the following form and a Metallic Products representative will contact you about your order.

CUSTOMER NAME: \_\_\_\_\_

COMPANY (if applicable): \_\_\_\_\_

WILL CALL Phone Number (Req'd): \_\_\_\_\_

SHIP TO: \_\_\_\_\_ ZIP (Req'd): \_\_\_\_\_

ORDER NUMBER (if applicable): \_\_\_\_\_

JOB Reference (if applicable): \_\_\_\_\_

ORDER DATE (MM/DD/YY): \_\_\_\_\_ DUE DATE (MM/DD/YY): \_\_\_\_\_

QUANTITY: \_\_\_\_\_

## ➤ STANDARD FEATURES

- 16-gauge Galvalume steel shell and baseplate
- Corners mitered and welded watertight
- Curbs prime painted after fabrication
- Positive hold-open device
- Water diverting cricket
- 6" minimum height on ridge side
- 1-1/2" – 3# density insulation when specified
- Gas-charged opening device

## ➤ ADDED OPTIONS

1. \_\_\_\_\_
2. \_\_\_\_\_
3. \_\_\_\_\_

MATCH ROOF PANEL: \_\_\_\_\_



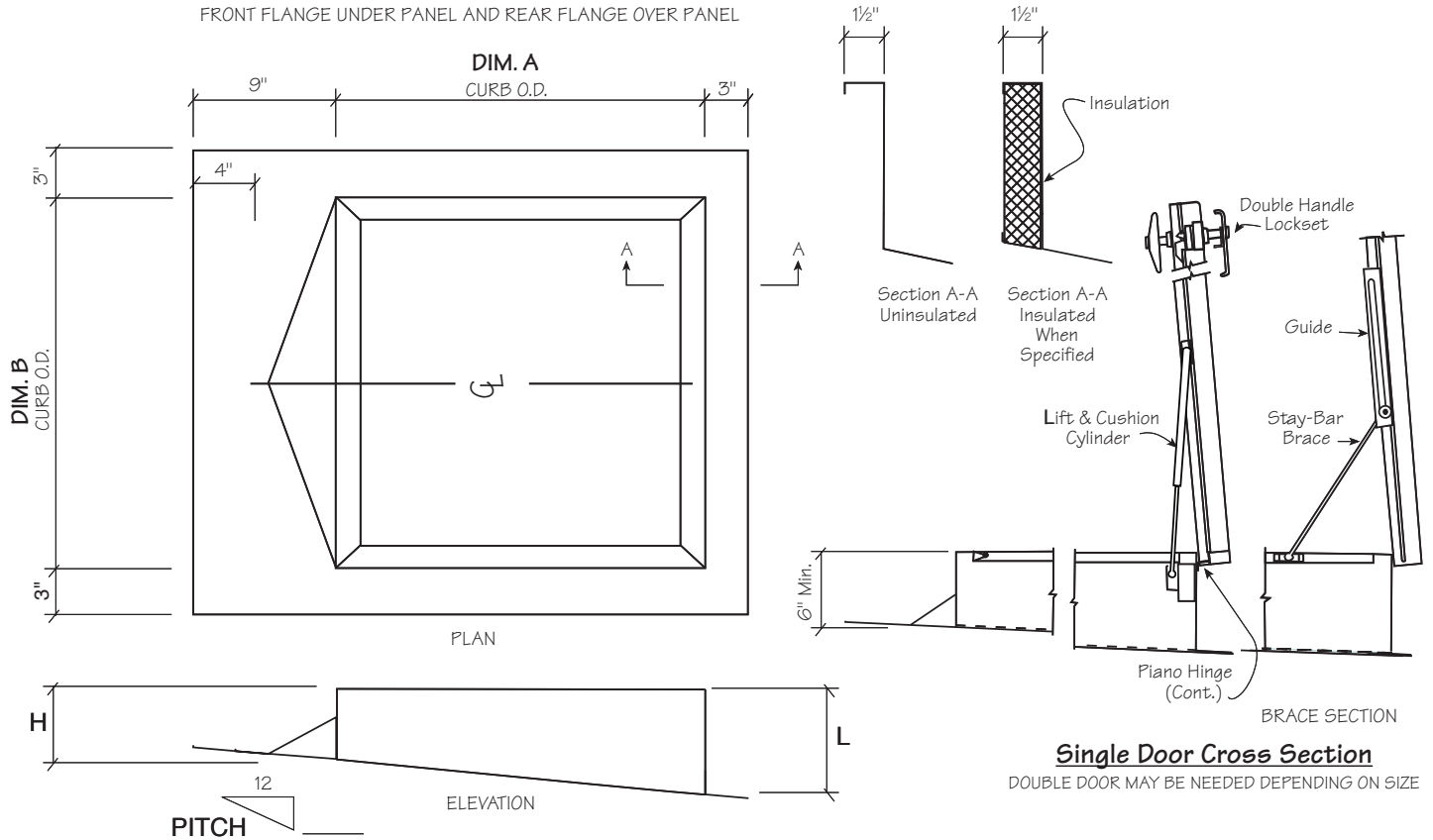
**PLEASE SEND COMPLETED FORM TO YOUR METALLIC PRODUCTS REPRESENTATIVE.** Questions? Call us at 800.356.7746 or email [sales@mpvent.com](mailto:sales@mpvent.com).



# ORDER FORM

## MP-RH2

### SLOPE MOUNT ROOF ACCESS HATCH, FLAT MOUNTING FLANGE



NO. REQ'D	DIM. A	DIM B	H	L	HINGE LOCATION*	TAG DESCRIPTION

\*Hinge may be located on any side. Please indicate RIDGE, EAVE, LEFT or RIGHT.

**SUBMIT FORM**



**PLEASE SEND COMPLETED FORM TO YOUR METALLIC PRODUCTS REPRESENTATIVE.** Questions? Call us at 800.356.7746 or email [sales@mpvent.com](mailto:sales@mpvent.com).

