



# ORDER FORM

## ➤ MP-RC6

**RIBS SHIPPED LOOSE FOR  
FIELD LOCATION AND INSTALLATION**

Please submit the following form and a Metallic Products representative will contact you about your order.

CUSTOMER NAME: \_\_\_\_\_

COMPANY (if applicable): \_\_\_\_\_

WILL CALL

SHIP TO: \_\_\_\_\_ ZIP (Req'd): \_\_\_\_\_

ORDER NUMBER (if applicable): \_\_\_\_\_

JOB Reference (if applicable): \_\_\_\_\_

ORDER DATE (MM/DD/YY): \_\_\_\_\_ DUE DATE (MM/DD/YY): \_\_\_\_\_

QUANTITY: \_\_\_\_\_

## ➤ STANDARD FEATURES

- 16-gauge Galvalume
- Corners mitered and welded watertight
- Welds prime painted after fabrication
- Additional reinforcing when specified
- Water diverter
- 6" minimum height on ridge side
- 1-1/2" – 3# density insulation when specified

## ➤ ADDED OPTIONS

1. \_\_\_\_\_
2. \_\_\_\_\_
3. \_\_\_\_\_

MATCH ROOF PANEL (*loose ribs*): \_\_\_\_\_

ROOF PITCH: \_\_\_\_\_



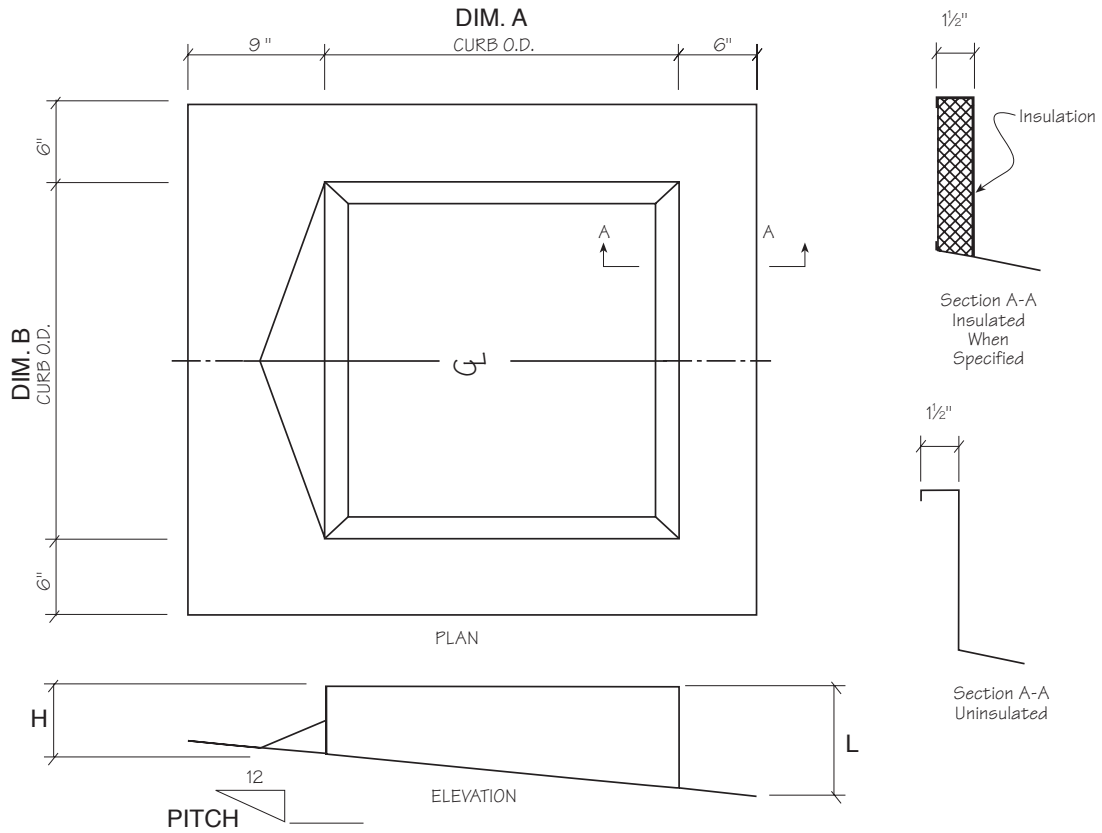
**PLEASE SEND COMPLETED FORM TO YOUR METALLIC PRODUCTS REPRESENTATIVE.** Questions? Call us at 800.356.7746 or email [sales@mpvent.com](mailto:sales@mpvent.com).





# ORDER FORM

**MP-RC6**  
**RIBS SHIPPED LOOSE FOR**  
**FIELD LOCATION AND INSTALLATION**



NO. REQ'D	DIM. A	DIM B	H	L	TAG DESCRIPTION

**SUBMIT FORM**



**PLEASE SEND COMPLETED FORM TO YOUR METALLIC PRODUCTS REPRESENTATIVE.** Questions? Call us at 800.356.7746 or email [sales@mpvent.com](mailto:sales@mpvent.com).

