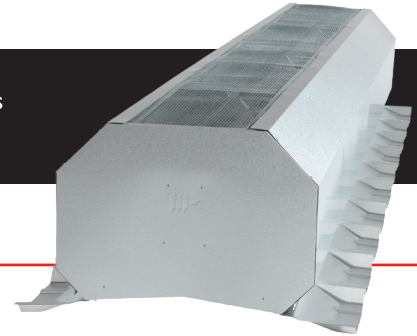




# REQUEST FOR QUOTE:

## CONTINUOUS RIDGE VENTILATORS

Please submit the following form and a Metallic Products representative will contact you about your quote.



JOB Reference (if applicable): \_\_\_\_\_

CUSTOMER NAME: \_\_\_\_\_

COMPANY (if applicable): \_\_\_\_\_

WILL CALL

SHIP TO: \_\_\_\_\_ ZIP (Req'd): \_\_\_\_\_

REQUESTED COMPLETION DATE (MM/DD/YY): \_\_\_\_\_

QUANTITY: \_\_\_\_\_

### TECHNICAL SPECIFICATIONS *Check only one box.*

#### VENT THROAT SIZE:

- 4"     9"     12"     18"     24"     30"     36"     48"

**NOTE:** Florida Approved vents are available in 9" and 12" throat sizes only.

#### REQUIRED WIND RATING:

- 100 mph     120 mph     Up to 140 mph 

#### DAMPER:

- YES     NO

#### COLOR:

- Galvalume     Burnished Slate     Saddle Tan     Other: \_\_\_\_\_
- Polar White     Light Stone     Ash Gray

#### ROOF SLOPE:

- 1:12     2:12     3:12     4:12     5:12     6:12     7:12     8:12     9:12     10:12     11:12     12:12

#### VENT SKIRT CONFIGURATION:

- Flat     Die Formed R-Panel     Die Formed M/U Panel

#### VENT OPERATOR OPTIONS (not applicable without damper):

- Locker Pull (10' pull chain with chain catch and handle for standard single unit operation)
- Lever Type     Boat Winch     Electric Operated     Pneumatic Operated

ADDITIONAL COMMENTS:

**SUBMIT FORM**



**PLEASE SEND COMPLETED FORM TO YOUR METALLIC PRODUCTS REPRESENTATIVE.** Questions? Call us at 800.356.7746 or email [sales@mpvent.com](mailto:sales@mpvent.com).

