

HI-EX VERTICAL DISCHARGE AIR EXHAUSTERS

Return to Power
Vent Page



AVAILABLE WITH:

- MOTOR (SEE PAGE 34)
- DISCONNECT SWITCH
- INLET GUARD
- MAGNETIC LATCHES
- REMOTE DRIVE (HC AND HF ONLY)

A continuing demand exists in commercial and industrial buildings for high velocity roof ventilators which exhaust foul air and disperse it high above the roof. The HI-EX is ideal for the "spot" ventilation of specific problem areas where rapid air removal is necessary or for general plant ventilation. This "plug-in" or package ventilation is easily installed out of the way, up on the roof. It is accessible and yet does not use valuable interior areas nor does it require costly duct systems.

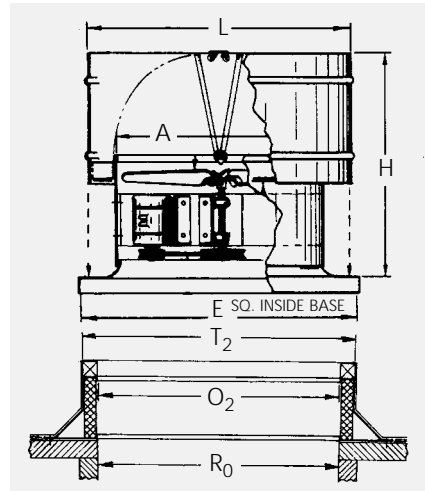
Dampers open automatically when the fan is started. The airstream holds the dampers open and excludes weather until the power is shut off. Then, the dampers automatically close tight as the air blast diminishes.

All units are galvanized construction.

DIMENSIONAL DATA HI-EX MODELS HC, HF

V - BELT DRIVE MODELS HC, HF

FAN DIAM.	A	H	L	Ro	T	E	FABRICATED UNIBEAM CURB		GAUGE STEEL
							O ₂	T ₂	
24	26	40	33	26	33 ¹ / ₂	35	30 ¹ / ₂	33 ¹ / ₂	16-20
30	32	44	39	32	39 ¹ / ₂	41	36 ¹ / ₂	39 ¹ / ₂	16-20
36	38	48	45	38	45 ¹ / ₂	47	42 ¹ / ₂	45 ¹ / ₂	16-20
42	44	51	51	44	51 ¹ / ₂	53	48 ¹ / ₂	51 ¹ / ₂	14-18
48	50	60	57	51	58 ¹ / ₂	60	55 ¹ / ₂	58 ¹ / ₂	14-18



HI-EX MODEL HC (CAST ALUMINUM PROP) **10 QB**

MODEL	RPM	TIP SPEED F.P.M.	FAN CAPACITY C.F.M.													
			0" S.P.		.125" S.P.		.250" S.P.		.375" S.P.		.500" S.P.		.750" S.P.		1.000" S.P.	
			CFM	BHP	CFM	BHP	CFM	BHP	CFM	BHP	CFM	BHP	CFM	BHP	CFM	BHP
HC24	1105	6943	4895	0.29	4350	0.32	3610	0.33	2730	0.33	2015	0.35				
	1265	7948	5600	0.43	5150	0.46	4505	0.49	3850	0.49	3080	0.49	1895	0.55		
	1450	9111	6420	0.65	6030	0.68	5555	0.72	4935	0.74	4370	0.74	3030	0.77	2115	0.83
	1595	10022	7065	0.87	6715	0.90	6315	0.95	5800	0.97	5240	0.99	4080	0.98	3045	1.05
HC30	890	6690	8485	0.42	7525	0.46	6415	0.49	4545	0.48	2120	0.45				
	1020	8011	9725	0.63	8920	0.69	8025	0.72	6785	0.74	5075	0.72				
	1125	8836	10725	0.84	10010	0.92	9180	0.95	8310	0.99	6980	1.00	3300	0.92		
	1285	10092	12250	1.26	11640	1.35	10925	1.40	10200	1.44	9430	1.48	6985	1.46	3525	1.37

Power rating (BHP) does not include drive losses. Performance shown is for installation Type A: Free inlet, Free outlet. Performance ratings include the effects of the dampers. See page 31 for roof curb availability.

Return to Power
Vent Page

HI-EX MODEL HC (CAST ALUMINUM PROP) **10 QB**

MODEL	RPM	TIP SPEED F.P.M.	FAN CAPACITY C.F.M.													
			0" S.P.		.125" S.P.		.250" S.P.		.375" S.P.		.500" S.P.		.750" S.P.		1.000" S.P.	
			CFM	BHP	CFM	BHP	CFM	BHP	CFM	BHP	CFM	BHP	CFM	BHP	CFM	BHP
HC36	635	5985	11585	0.69	10150	0.73	8080	0.74	4455	0.67						
	700	6597	12770	0.92	11500	0.97	9780	1.00	7590	0.97	3955	0.88				
	800	7540	14595	1.37	13515	1.44	12225	1.48	10490	1.48	8455	1.44				
	880	8294	16055	1.83	15085	1.90	13970	1.86	12550	1.98	10995	1.96	5575	1.75		
	1010	95196	18425	2.76	17595	2.85	16675	2.92	15660	2.98	14340	2.99	11415	2.92	6280	2.64
HC42	550	048	14775	0.94	12845	0.98	9775	0.98	5870	0.94						
	630	6927	16925	1.41	15300	1.47	13025	1.48	9945	1.47	6495	1.40				
	695	7642	18670	1.89	17225	1.97	15450	1.98	12895	1.99	9895	1.97				
	795	8742	21360	2.84	20120	2.92	18705	2.96	16840	2.98	14570	2.97	9240	2.85		
	945	10391	25390	4.76	24365	4.88	23250	4.95	22055	4.97	20445	5.00	1660	4.98	12085	4.85
HC48	540	6787	20740	1.40	18060	1.45	14775	1.44	9805	1.35						
	600	7540	23045	1.92	20660	1.98	17935	2.00	14605	1.94	8295	1.82				
	685	8608	26310	2.86	24245	2.93	21995	2.98	19410	2.96	16410	2.88				
	810	10179	31110	4.72	29385	4.81	27565	4.89	25595	4.93	23415	4.91	18515	4.72		

Power rating (BHP) does not include drive losses. Performance shown is for installation Type A: Free inlet, Free outlet. Performance ratings include the effects of the dampers. See page 31 for roof curb availability.

HI-EX MODEL HF (STEEL PROP) **10 QB**

MODEL	RPM	TIP SPEED F.P.M.	FAN CAPACITY C.F.M.													
			0" S.P.		.125" S.P.		.250" S.P.		.375" S.P.		.500" S.P.					
			CFM	BHP	CFM	BHP	CFM	BHP	CFM	BHP	CFM	BHP	CFM	BHP		
HF24	611	3839	4890	0.30	4075	0.30	2565	0.29	1735	0.33						
	672	4222	5375	0.39	4685	0.40	3190	0.38	2325	0.41						
	750	4712	6000	0.55	5410	0.55	4190	0.52	3155	0.54	2495	0.58				
	857	5385	6855	0.82	6320	0.81	5680	0.81	4320	0.78	3550	0.80				
	943	5925	7545	1.09	7065	1.08	6555	1.10	5470	1.04	4425	1.04				
HF30	440	3465	6640	0.29	4525	0.28	2280	0.31								
	484	3801	7305	0.39	5655	0.38	2450	0.40								
	538	4225	8120	0.54	6775	0.54	3815	0.52	2775	0.57						
	615	4830	9280	0.80	8225	0.82	6190	0.76	3530	0.80	3085	0.86				
	678	5325	10230	1.08	9335	1.10	7845	1.05	5205	1.02	3325	1.10				
775	6087	11695	1.61	10970	1.64	9860	1.62	8200	1.54	5785	1.53					
HF36	370	3487	9445	0.40	6950	0.37										
	412	3883	10515	0.55	8265	0.52	3875	0.51								
	470	4430	11995	0.82	10120	0.78	7570	0.75	3135	0.78						
	520	4901	13270	1.11	11640	1.07	9705	1.02	5585	1.02						
	594	5598	15160	1.65	13815	1.60	12060	1.56	10115	1.51	6090	1.52				
	654	6164	16690	2.20	15500	2.15	13980	2.10	12530	2.05	10190	2.02				
750	7069	19140	3.32	18135	3.26	16895	3.20	15505	3.15	14275	3.08					
HF42	391	4299	14530	0.81	12940	0.81	7480	0.80								
	430	4728	15980	1.08	14735	1.09	10485	1.05	5830	1.13						
	492	5410	18285	1.62	17370	1.64	15090	1.57	10210	1.59						
	542	5960	20145	2.17	19355	2.19	17765	2.15	14030	2.09	9765	2.14				
	620	6817	230	3.25	22410	3.28	21370	3.28	19555	3.17	15760	3.13				
	735	80824	27315	5.41	26830	5.45	26115	5.47	25090	5.45	23665	5.30				
HF48	323	059	18195	0.81	13475	0.82										
	355	4461	20000	1.08	16030	1.09	9080	1.13								
	407	5115	22930	1.62	19810	1.65	14585	1.65								
	448	5630	25235	2.16	22595	2.20	18310	2.20	12585	2.24						
	513	6447	28900	3.25	26810	3.30	23500	3.30	19230	3.30	14060	3.37				
	608	7640	34250	5.41	32680	5.49	30245	5.49	27235	5.49	23625	5.50				

Power rating (BHP) does not include drive losses. Performance shown is for installation Type A: Free inlet, Free outlet. Performance ratings include the effects of the dampers. See page 31 for roof curb availability.

HITESAVER MODEL HS V-BELT DRIVE

Return to Power
Vent Page



RECOMMENDED FOR COMMERCIAL USE

For applications where height is a consideration, Penn introduces the HiteSaver, Model HS. The HiteSaver features an extra-low profile. The propeller, motor and drive are recessed into the roof opening and extend below the roof line. This design provides for convenient access from the building interior when structural members provide clearance.

The windband is constructed of galvanized steel and contains two reinforcing ribs. This assembly is supported by the curb base and steel brackets. The curb base is all-welded heavy gauge galvanized steel with a deep spun venturi to smooth airflow. External bracing provides extra rigidity. Integral lifting lugs are included.



Penn Ventilation certifies that the Model HS Roof Exhausters shown are licensed to bear the AMCA Seal. The ratings shown are based on tests and procedures performed in accordance with AMCA Publication 211 and Publication 311 and comply with the requirements of the AMCA Certified Ratings Program.



PERFORMANCE DATA **10 QB**

MODEL	RPM	TIP SPEED F.P.M.	FAN CAPACITY - C.F.M.										SONES @ 0.125"	
			0" S.P.		.125" S.P.		.250" S.P.		.375" S.P.		.500" S.P.			
			CFM	BHP	CFM	BHP	CFM	BHP	CFM	BHP	CFM	BHP		
HS30	743	5836	9174	0.78	8309	0.83	7258	0.87						15.4
	797	6260	9841	0.96	9039	1.02	8105	1.06						17.9
	915	7186	11298	1.45	10611	1.52	9838	1.58	8968	1.62				23
	1008	7917	12446	1.94	11831	2.02	11156	2.09	10410	2.14	9586	2.17		27
HS36	514	4844	12345	0.78	10563	0.84								15.8
	551	5193	13234	0.96	11578	1.03	9831	1.08						17.0
	633	5966	15203	1.45	13775	1.53	12265	1.60						19.6
	697	6569	16740	1.94	15447	2.03	14108	2.11	12731	2.17				22
HS42	465	5113	17921	1.50	15971	1.57	13683	1.63						16.7
	513	5641	19770	2.01	18029	2.09	15986	2.15						20
	588	6465	22661	3.03	21162	3.12	19467	3.19	17654	3.27				26
	698	7675	26900	5.07	25638	5.17	24325	5.27	22827	5.35	21297	5.44		35
	799	8785	30793	7.60	29690	7.72	28586	7.84	27386	7.95	26037	8.03		44
HS48	391	4913	21647	1.45	18724	1.54	14310	1.54	6884	1.62				17.0
	431	5416	23862	1.94	21390	2.05	17699	2.09	12463	2.06				20
	495	6220	27406	2.94	25370	3.07	22454	3.15	19095	3.17	14094	3.13		25
	587	7376	32499	4.91	30793	5.05	28783	5.19	26130	5.28	23272	5.29		32
	673	8457	37261	7.39	35772	7.56	34212	7.73	32142	7.86	29828	7.96		39

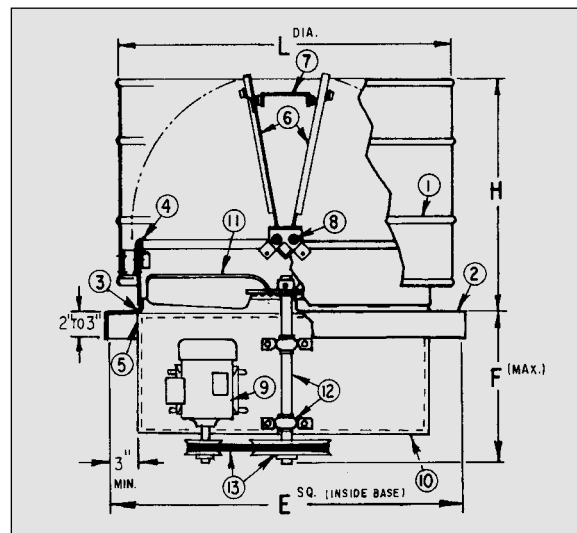
Performance shown is for installation type A: Free Inlet, Free Outlet. Power rating (BHP) does not include drive losses. The sound ratings shown are for loudness values in fan sones at 5'0" (1.5m) in a hemispherical free field per AMCA Standard 301. Values shown are for installation type A: free inlet fan sone levels. Performance ratings include the effect of backdraft damper in the airstream.

DIMENSIONAL DATA

FAN DIAM	H	L	Ro	E	F
30	24	36	34	38-1/2	15
36	26	42	40	44-1/2	15
42	30	48	46	50-1/2	18
48	32	54	52	56-1/2	18

ALL DIMENSIONS IN INCHES.

This model also available UL Listed for Heat & Smoke Control through normal channels with standard lead time.



Return to Power
Vent Page